

Desert Lights



Desert Lights: It's the golden hour and a hiker lifts her camera to catch the color and texture of a landscape at rest. But her mind's eye captures it best and the image becomes her go-to spot during meditation.







Previous: Canvas Rug | VR60849
Opposite: Tailor Tuft Field | HF60571

Rays of light travel 92 million miles to paint the desert from dawn to dusk. With each passing hour an otherworldly palette shows itself in a scene rich with the flora and fauna that call this place home. And for the artists who gather here, every shifting hour offers up inspiration.





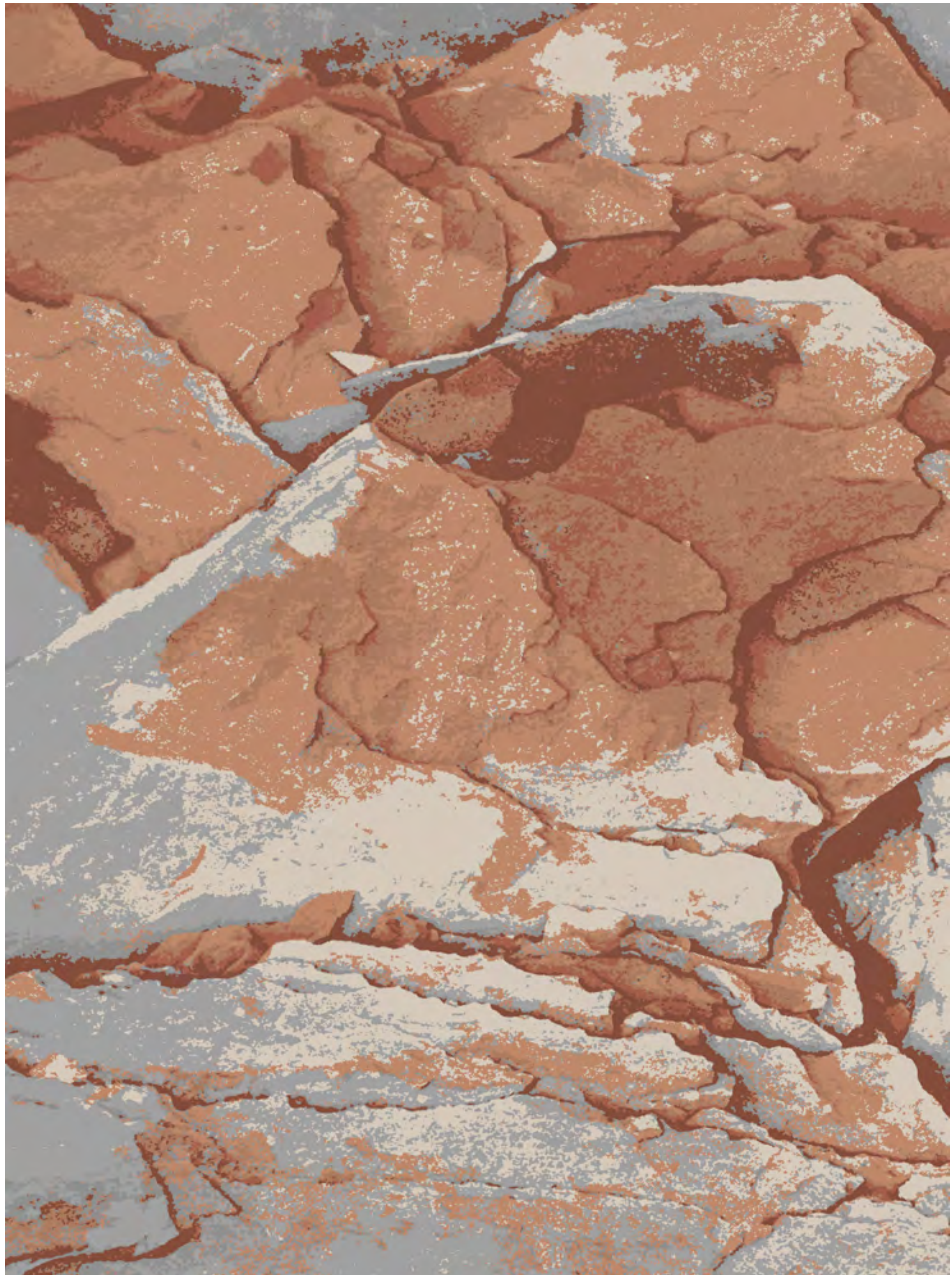
Previous: Tailor Tuft Field | HF60571
Opposite: Canvas Corridor | VN60854

With twenty-one custom patterns of sculpted texture and high definition that no other manufacturer can offer, Desert Lights presents a breathtaking view carved from nature.



Shifting Landscapes

The richness of a muse can only be captured by a palette equally rich. Find the reflections and texture of ancient sands here, brought to life with cut and loop technology that offers precision details and sculpted texture. It's Tailor Tuft for unprecedented control to create spaces that, ultimately, allow people to let go.



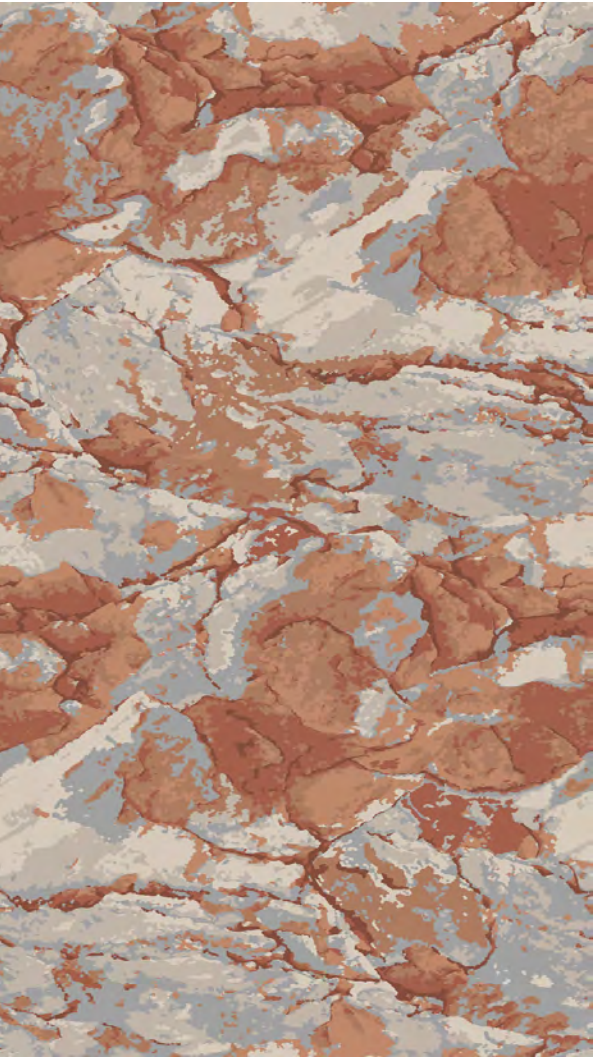
HR60563
Rug | Size: 12' W x 16'2.9" L | 3.66m x 4.95m

- A 6046 Loop
- B 6073 Cut/Loop
- C 6031 Cut/Loop
- D 5436D Cut/Loop



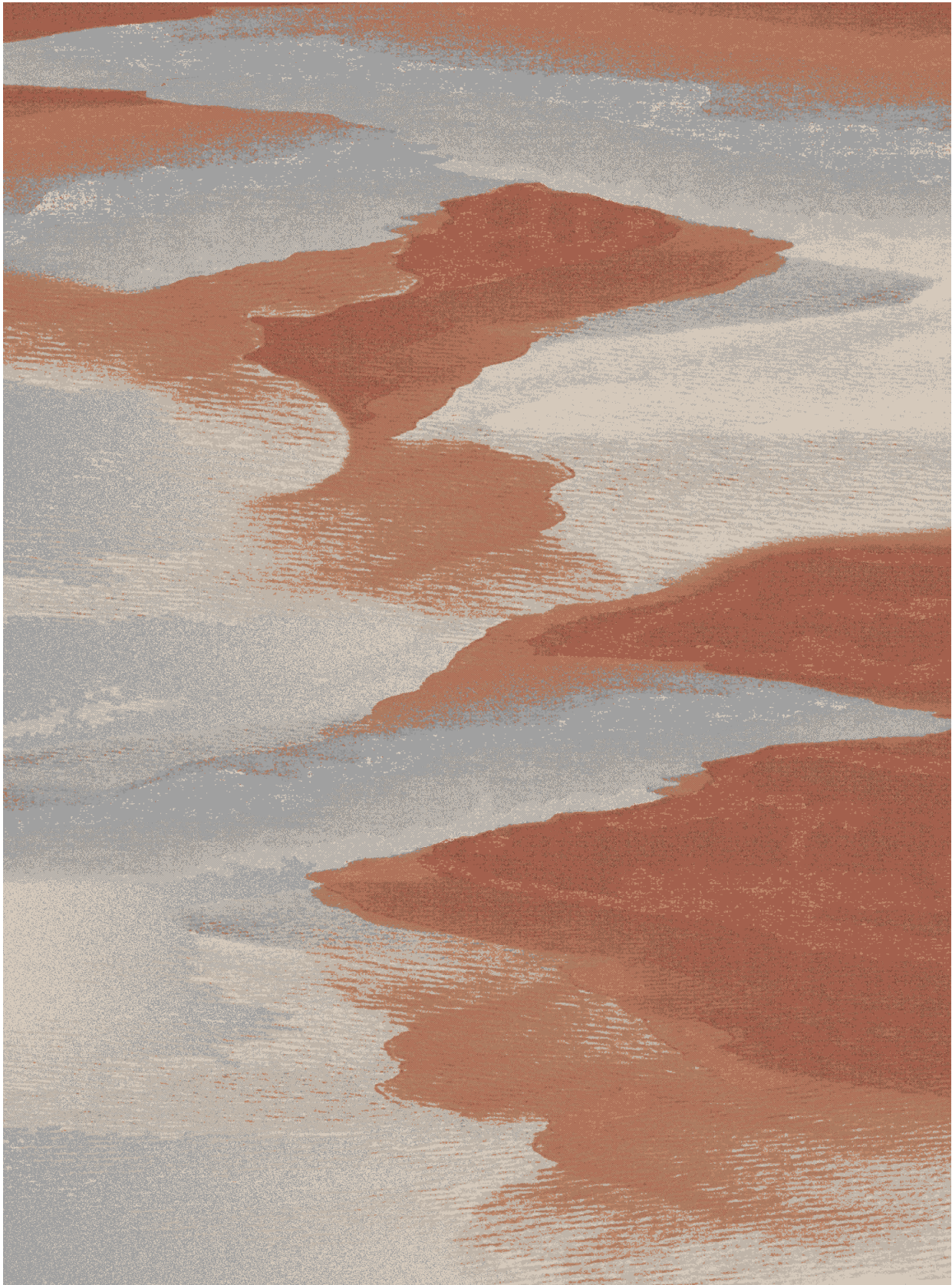
HF60571
Field | Repeat: 6' W x 6'3.6" L | 1.83m x 1.92m

- A 6046 Cut/Loop
- B 6073 Cut/Loop
- C 6031 Cut/Loop
- D 5436D Cut/Loop

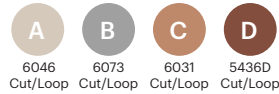


HN60562
Corridor | Repeat: 6' W x 10'8" L | 1.83m x 3.25m

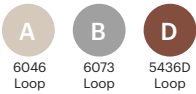
- A 6046 Cut/Loop
- B 6073 Loop
- C 6031 Cut/Loop
- D 5436D Cut/Loop



HR60561
Rug | Size: 12' W x 16'2.9" L | 3.66m x 4.95m



HF60559
Field | Repeat: 3' W x 2'2.2" L | 0.91m x 0.66m



HN60564
Corridor | Repeat: 6' W x 13'4" L | 1.83m x 4.6m





HF60552
Field | Repeat: 12' W x 13'1.1" L | 3.66m x 3.99m

- A

6046

Cut/Loop
- B

6073

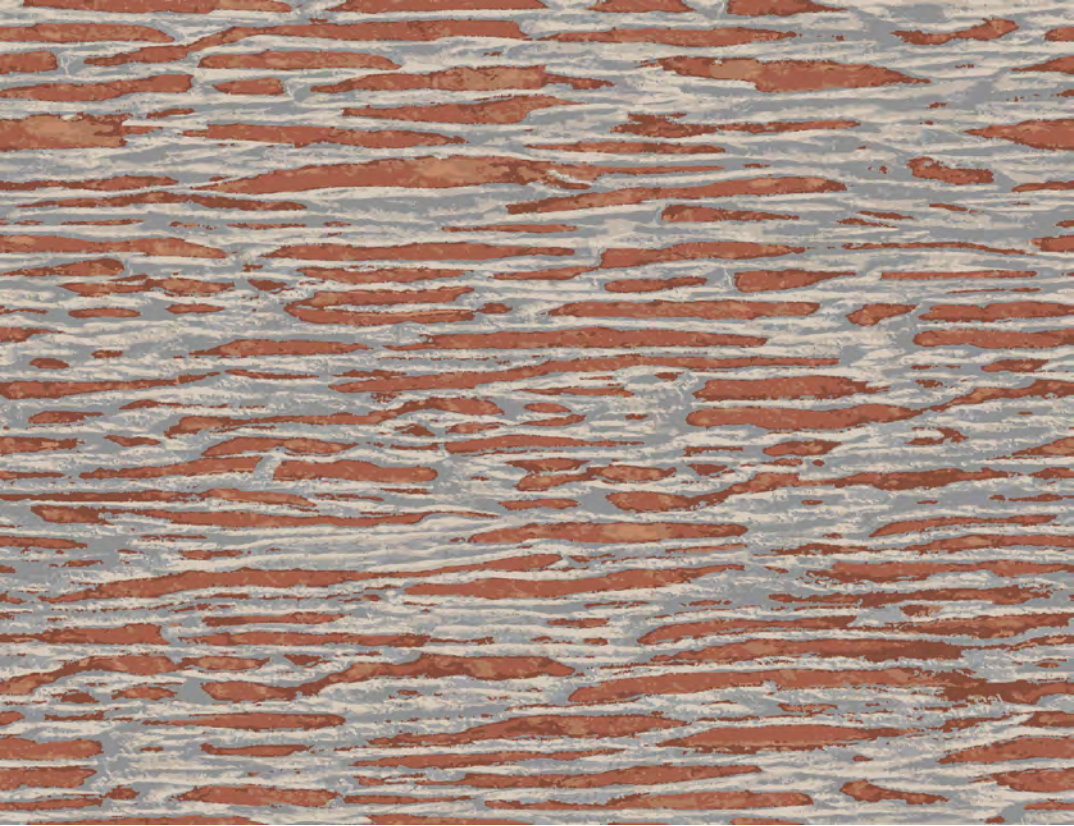
Cut/Loop
- C

6031

Cut/Loop
- D

5436D

Cut/Loop



HF60557
Field | Repeat: 12' W x 9'2.9"L | 3.66m x 2.81m

- A

6046

Cut/Loop
- B

6073

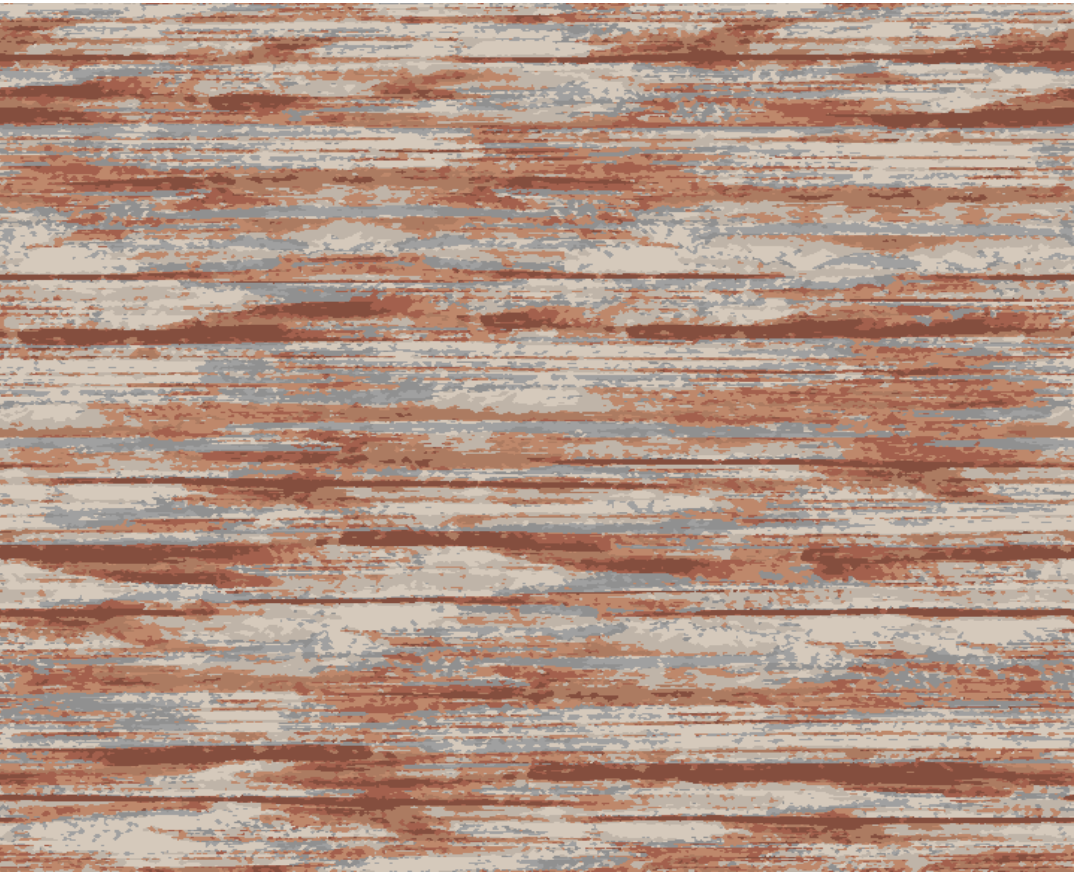
Cut/Loop
- C

6031

Cut/Loop
- D

5436D

Cut/Loop



HF60572
Field | Repeat: 6' W x 4'10.2" L | 1.83m x 1.48m

- A

6046

Cut/Loop
- B

6073

Cut/Loop
- C

6031

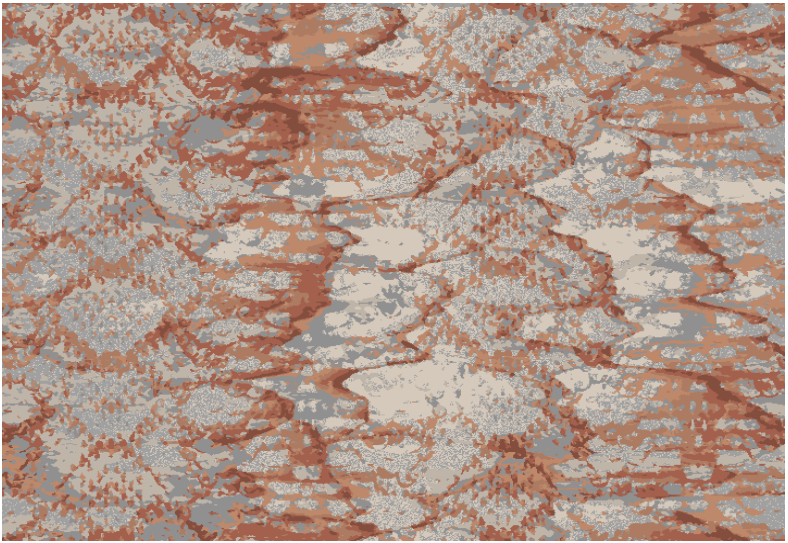
Cut/Loop
- D

5436D

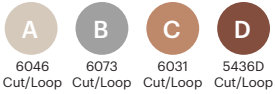
Cut/Loop



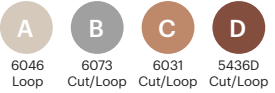
HR60569
Rug I Size: 12' W x 16'2.9" L | 3.66m x 4.95m

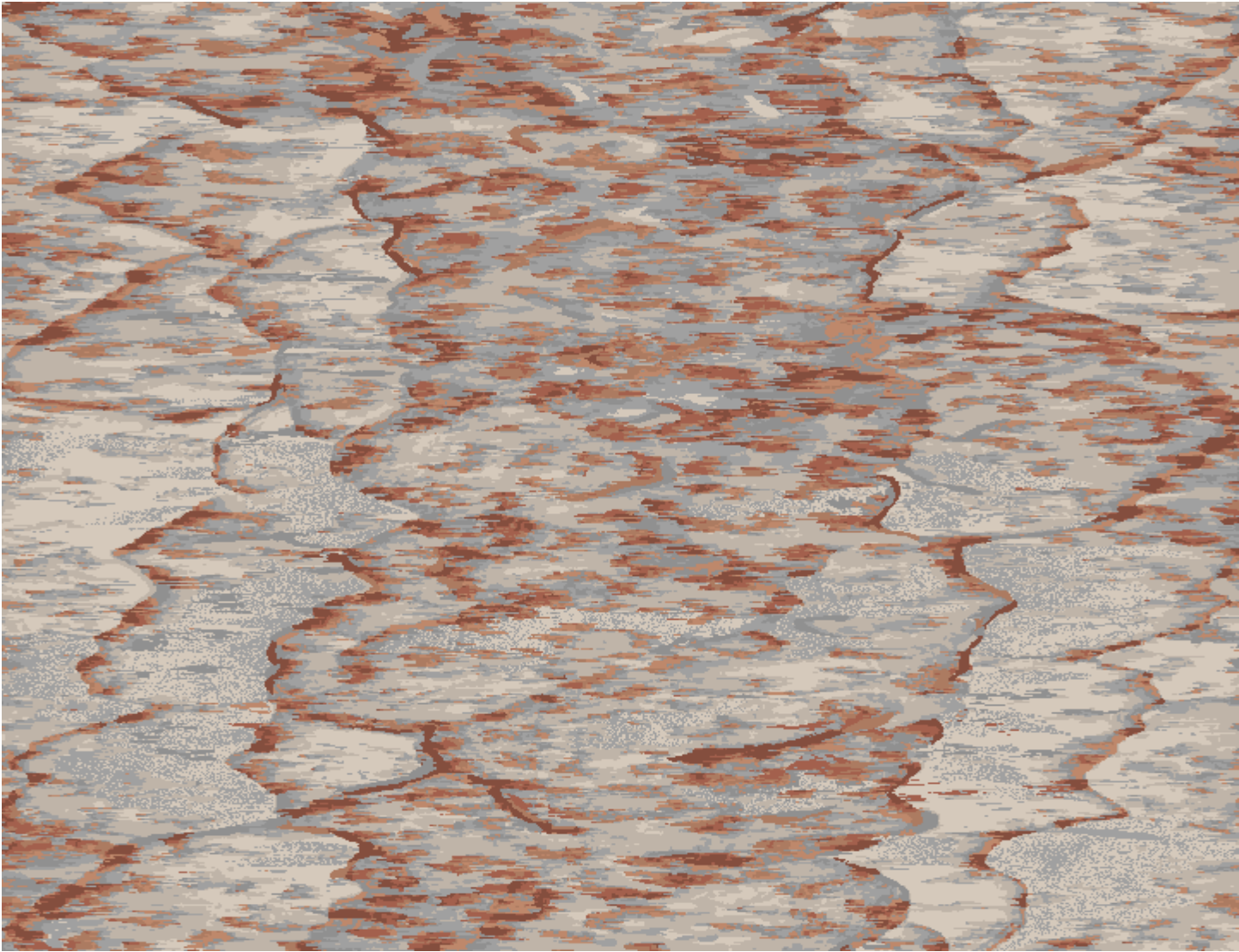


HN60570
Corridor I Repeat: 6' W x 4'1.5" L | 1.83m x 1.26m



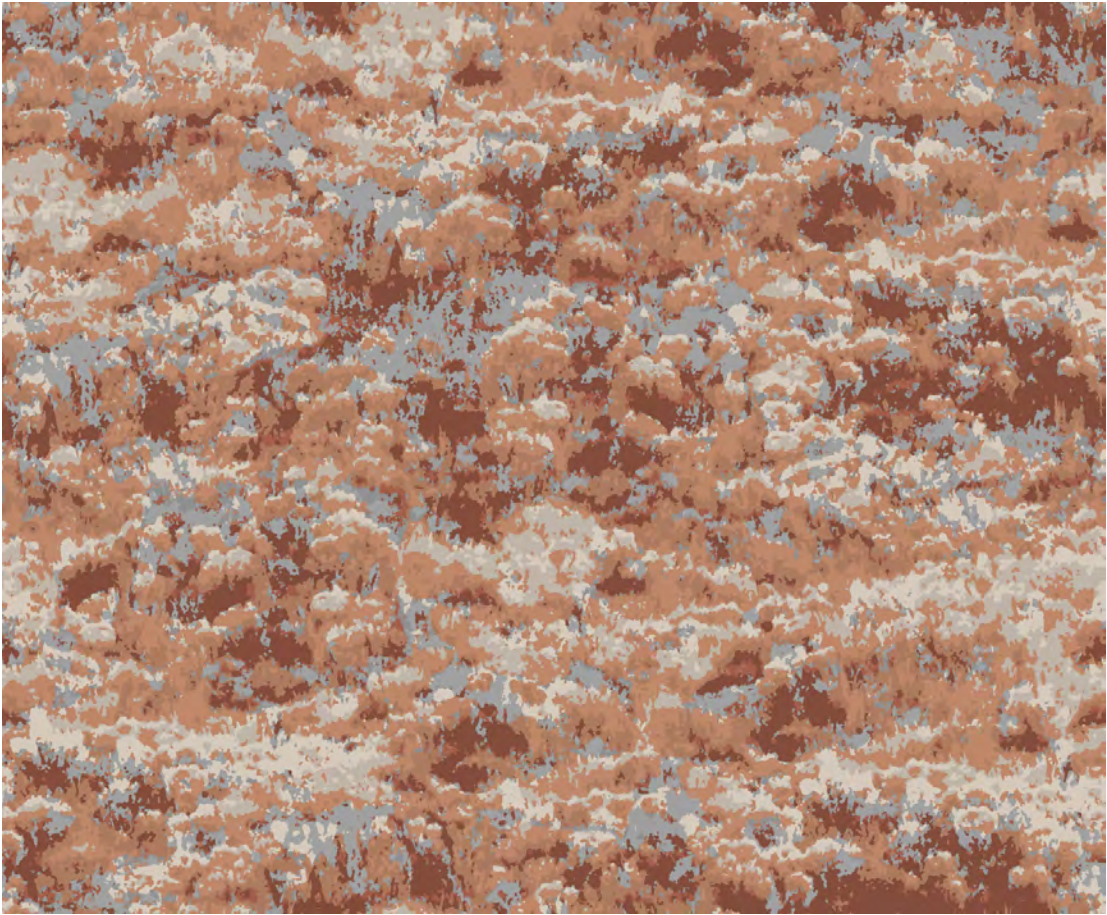
HN60568
Corridor I Repeat: 6' W x 14'9.4" L | 1.83m x 4.51m





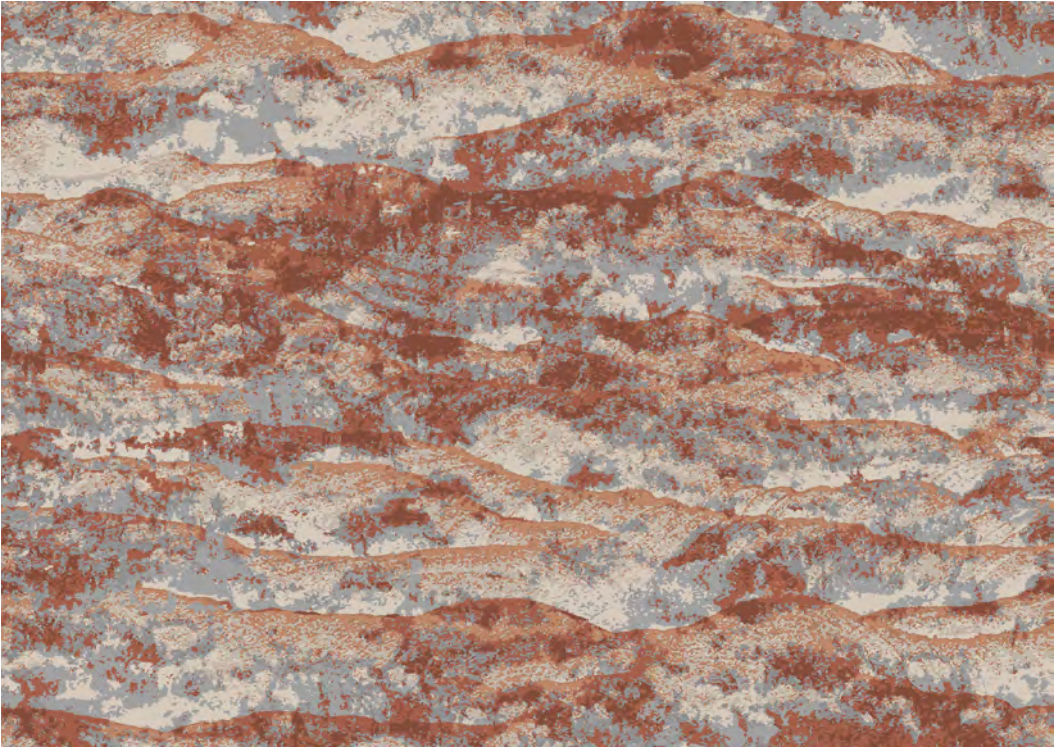
HN60555
Corridor I Repeat: 6' W x 4'7.3" L | 1.83m x 1.4m

A	B	C	D
6046	6073	6031	5436D
Cut/Loop	Cut/Loop	Cut/Loop	Cut/Loop



HF60558
Field I Repeat: 12' W x 8'5.8" L | 3.66m x 2.59m

A	B	C	D
6046	6073	6031	5436D
Cut/Loop	Cut/Loop	Cut/Loop	Cut/Loop



HF60553
Field I Repeat: 12' W x 8'5.8" L | 3.66m x 2.59m

A	B	C	D
6046	6073	6031	5436D
Cut/Loop	Cut/Loop	Cut/Loop	Cut/Loop



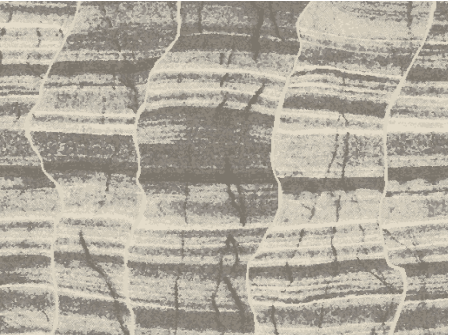
TAILOR TUFT HR60561, HR60569, HR60563, HF60559

Colors of the Desert

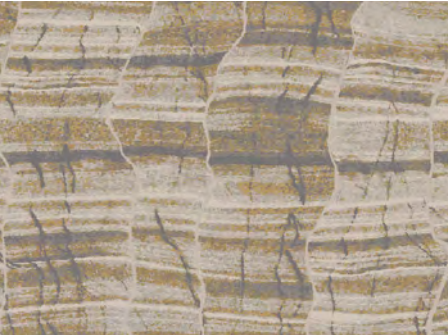
The colorway for the Tailor Tuft portion of the collection consists of two red tones, one gray and one light neutral. It has a dramatic look and echoes the main concept of the American southwest red desert. Further explore the Desert Lights collection with these curated color palettes in Shaw Contract’s Foundry

Custom Design Tool. Tailored for designers, Foundry offers a powerful, virtual workspace where users can recolor products in rendered environments and order physical samples of their created patterns, streamlining the design-to-implementation process.

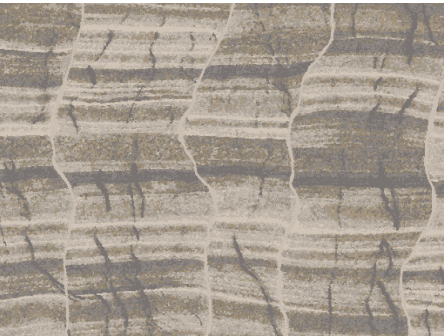
Experiment with Foundry at: foundry.shawhospitality.com



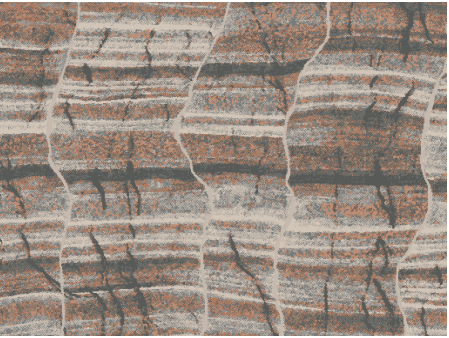
NATURAL
A CL842 B 5501D C 5384D D CJ331



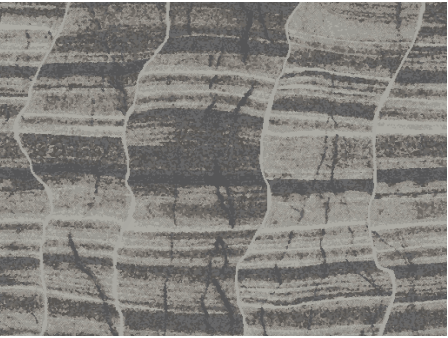
SUNRISE
A 6046 B 5790D C 6209 D 5500D



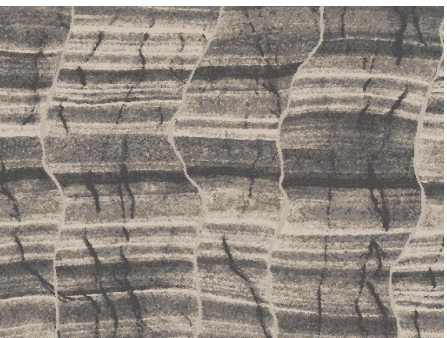
EARTH
A 6046 B 5790D C 5650D D 5500D



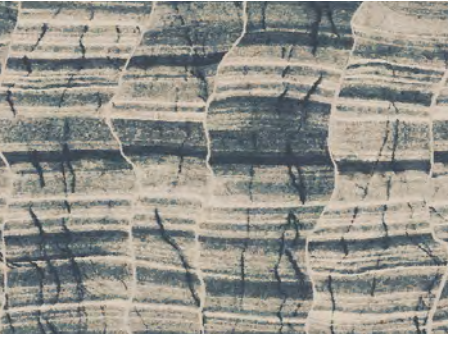
PAINTED DESERT
A 6046 B 6073 C 6031 D 5510D



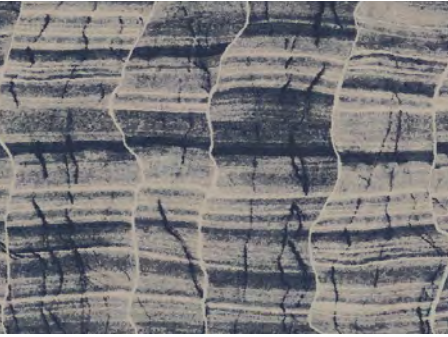
SNAKE SKIN
A CB216 B 5384D C 5598D D CK785



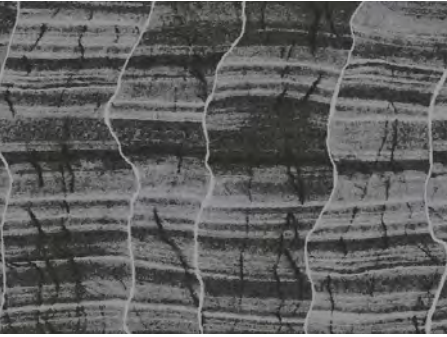
STONE
A 6046 B 5944D C 5500D D 5850D



DUSK
A CL871 B 5795D C 6022 D CM904



MIDNIGHT
A 5790D B 5365D C CB207 D 5728D



SCARAB
A 5365D B CM500 C 5656D D 5223D

A Desert Canvas

Shout in a canyon of color and it will echo back to you in muted gradations picked up in the reds, grays, and earthen tones of its walls. Placed at the feet of people moving in spaces designed for restfulness, and, they too, will hear the calm. With the latest Canvas patterns, the desert can be found everywhere.



VR60848
Rug | Size: 12' W x 18' L | 3.66m x 5.49m



VN60855
Corridor | Repeat: 6' W x 13'4" L | 1.83m x 4.06m



VN60854
Corridor | Repeat: 6' W x 18' L | 1.83m x 5.49m



VR60849
Rug | Size: 12' W x 18' L | 3.66m x 5.49m

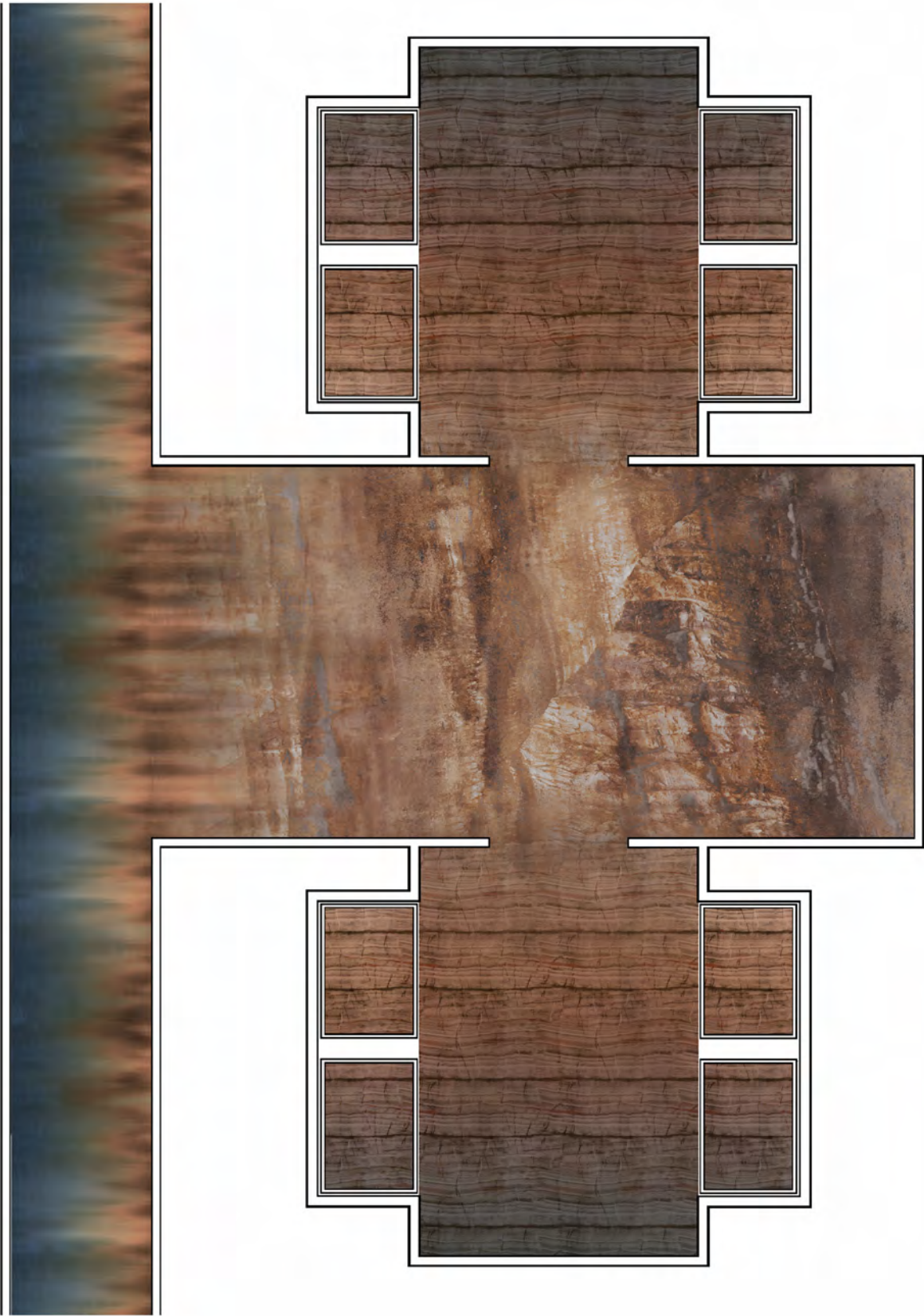


VF60853
Field | Repeat: 3' W x 3'6" L | 0.91m x 1.07m



VN60857
Corridor | Repeat: 6' W x 16'8" L | 1.83m x 5.08m

A walk through the desert,
with its blanket of shifting lights,
ends with a shift in perspective.



CANVAS VN60854, VR60848, VF60853

The only collection with sculptured Tailor Tuft and Canvas dye-injection technology that summons the peace of the landscape millions of years in the making.





Previous : Tailor Tuft Field | HF60552

A desert diamondback slinks across a land that rises and falls with earthen stripes. Scratchy fauna contradict themselves with soft blooms, and vast tracks of dirt hang on to the sun and its warmth. Find it all underfoot with the very latest collection from Shaw Contract + Rockwell Group.



rockwellgroup + ShawContract®
hospitality